

Table of Contents

Preface	i
Introduction to the Ranch Mink	1
General Directions	2
The Skeletal System	5
The Muscles of the Mink	16
The Digestive and Respiratory System	26
The Urogenital System	30
The Circulatory System	33
The Nervous System	41
Special Sense Organs	48
The Endocrine System	52
The Integumentary System	53

List of Illustrations

<u>Figure</u>	<u>Page</u>
1 Anatomical Reference Points Used In Dissection	3
2 Planes of a Bilaterally Symmetrical Animal.....	4
3 Dorsal View of the Mink Skull (drawn from specimen)	6
4 Ventral View of the Mink Skull (drawn from specimen)	7
5 Lateral View of the Mink Skull (drawn from specimen).....	8
6 Hyoid Apparatus in Position and in an Isolated Dorsolateral View (drawn from specimen).....	9
7 Skeletal System	10
8 Lateral and Anterior Views of a Lumbar Vertebra (drawn from specimen).....	11
9 Lateral and Posterior Views of the Atlas (drawn from specimen)	12
10 Lateral and Posterior Views of the Axis (drawn from specimen).....	12
11 Lateral and Posterior Views of a Typical Cervical Vertebra (drawn from specimen).....	12
12 Anterior View of a Thoracic Vertebra and Rib (drawn from specimen).....	13
13 Lateral View of the Scapula and Two Views of the Humerus (drawn from specimen)	14
14 Lateral View of the Radius and Ulna (drawn from specimen)	14
15 Lateral View of the Pelvic Girdle and Femur (drawn from specimen)	15
16 Ventral Muscles	18
17 Lateral Muscles	19
18 Ventral View of Viscera	27
19 Dorsal View of Pharyngeal Region — Tongue Cut and Hyoid Attached (drawn from specimen)	28
20 Male Urogenital System.....	31
21 Female Urogenital System	31
22 Venous System	34
23 Arterial System	36
24 Hepatic Portal System	38
25 Cut Surface of Bisected Heart (drawn from specimen)	39
26 Dorsal Surface of the Mink Heart (drawn from specimen)	40
27 Ventral Surface of the Mink Heart (drawn from specimen)	40
28 Dorsal Surface of the Mink Brain.....	42
29 Ventral Surface of the Mink Brain.....	42
30 Mid-Sagittal View of the Brain.....	43
31 Dorsal View of the Right Half of the Brain with the Dorsal Portion of Cerebrum Removed (drawn from specimen)	44
32 Ventral View of the Lumbosacral Plexus (drawn from specimen)	46
33 Muscles of the Eye (diagrammatic representation)	48
34 The Eye In Cross-Section (diagrammatic representation)	49
35 The Middle and Inner Ear (diagrammatic representation).....	51
36 The Skin and Subcutaneous Tissue (diagrammatic representation)	54

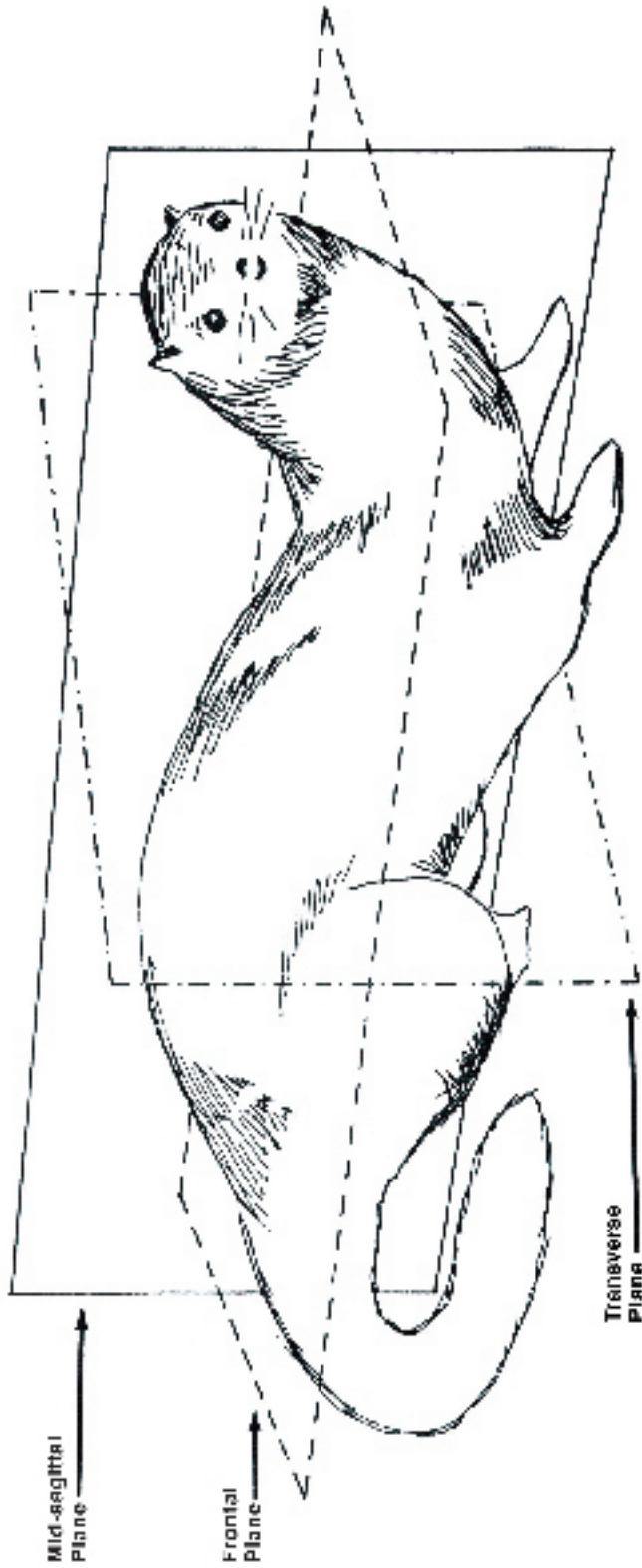


Figure 2 — Planes of a Bilaterally Symmetrical Animal

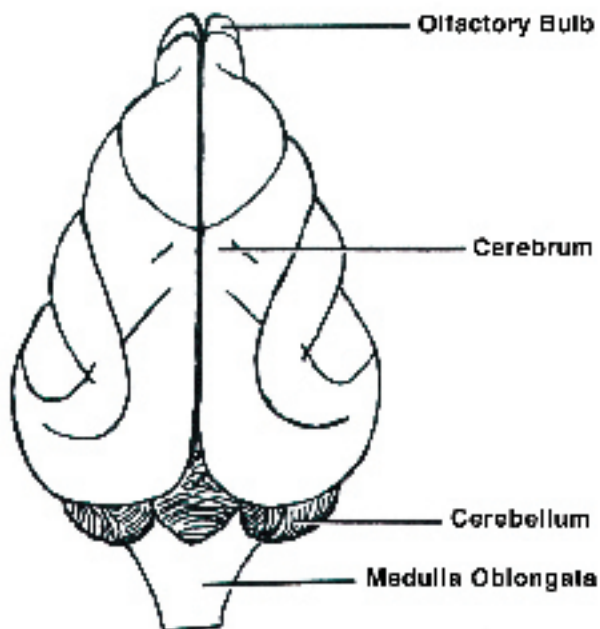


Figure 28 — Dorsal Surface of the Mink Brain

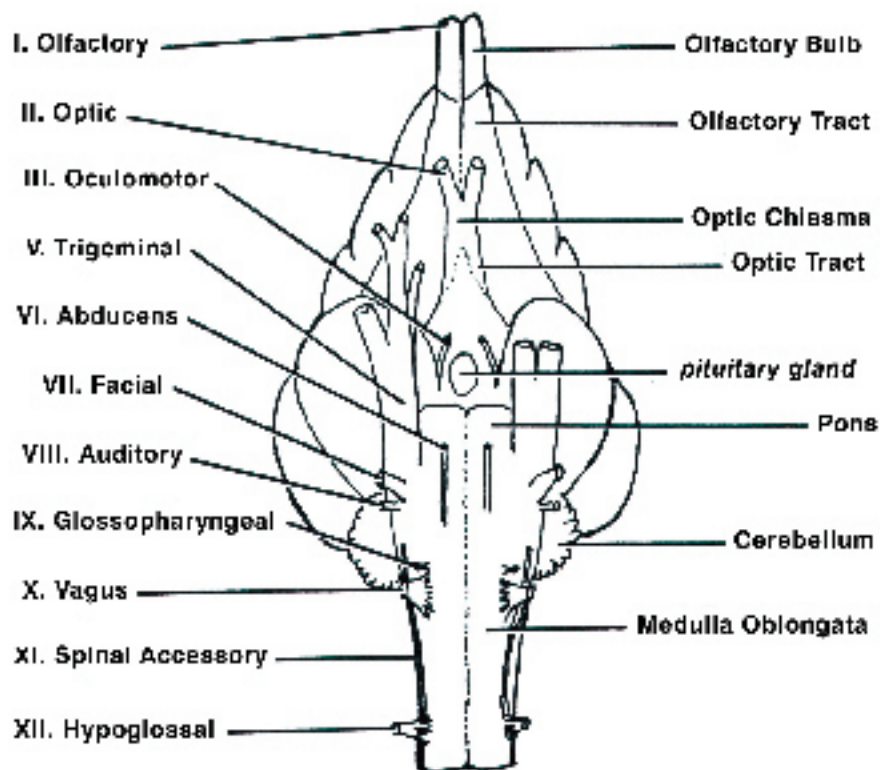


Figure 29 — Ventral Surface of the Mink Brain